

# **Release Notes**

## **Certifier / J-Reporter**

### **Version 8.0 Build 1087**

**April 15, 2019**

**Version: 1.0**

## 1 New or enhanced features: Certifier

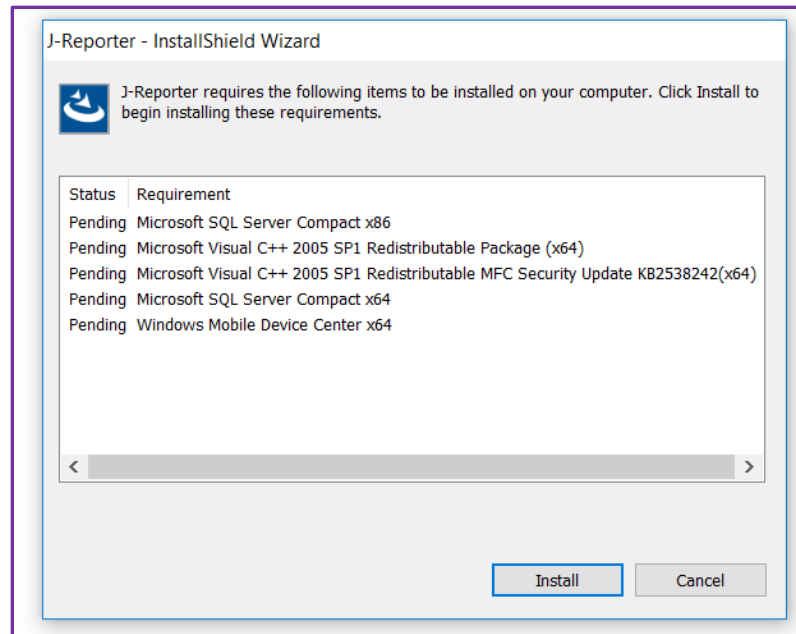
- ✓ Copper cable database updated.
- ✓ Fiber cable database updated.
- ✓ Tone Generator feature included.
- ✓ Single Ended Tests.
- ✓ Copper / Fiber limits updated as per latest standards
  - ISO/IEC 11801-1 copper and fiber limits updated to the latest publication 2017-11 (Edition 1)
  - TIA 568.2 Copper limits updated to latest D revision (2018).
  - TIA Cat 6A Patch cord limits updated based on TIA-568.2-D.
  - All Channel and Link limits of EN 50173 updated based on latest document EN 50173-1:2018.
    1. EN 50173 - Class FA Channel
    2. EN 50173 - Class FA Config C Link
    3. EN 50173 - Class FA Config A B D Link
    4. EN 50173 - Class F Config C Link
    5. EN 50173 - Class F Config A B D Link
    6. EN 50173 - Class F Channel
    7. EN 50173 - Class EA Config C Link
    8. EN 50173 - Class EA Config A B D Link
    9. EN 50173 - Class EA Channel
    10. EN 50173 - Class E Config C Link
    11. EN 50173 - Class E Config A B D Link
    12. EN 50173 - Class E Channel
    13. EN 50173 - Class D Config C Link
    14. EN 50173 - Class D Config A B D Link
    15. EN 50173 - Class D Channel
- ✓ New Copper Custom Limits
  - Paige Datacom 1Gb channel
  - Paige Datacom 10Mb channel
- ✓ New Icons on Certifier.
- ✓ Other Bug Fixes and Enhancements.

## 2 New or enhanced features: J-Reporter

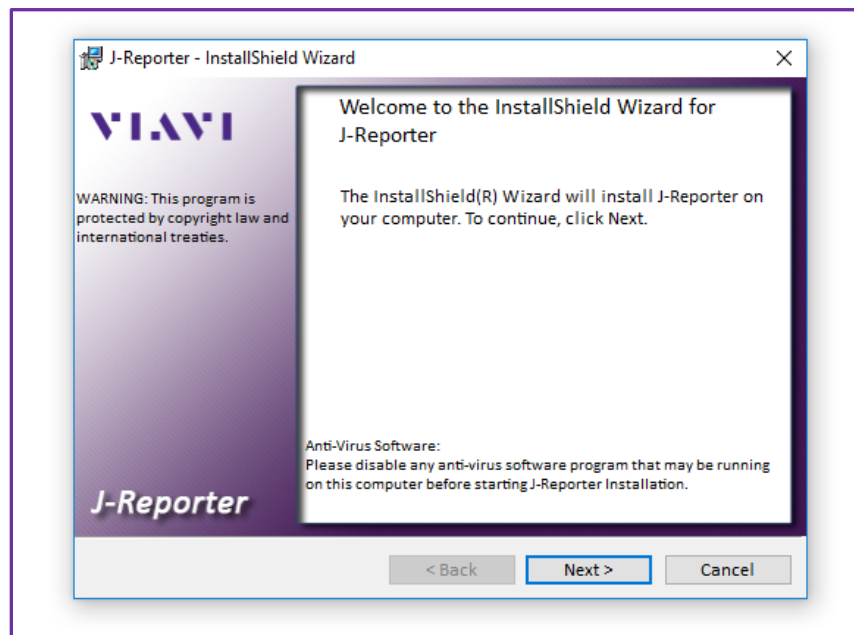
- ✓ Improved PDF Reports
- ✓ New Icons on J-Reporter
- ✓ Clickable link for “Check for Updates”
- ✓ Other Bug Fixes and Enhancements
- ✓ Settings Menu has been re-organised
- ✓ Feature to import MPOLx results to J-Reporter
  - Requires FiberChekPRO be installed (for device drivers)
  - Compatible with MPOLx firmware version V02.08.01 and above
  - Results needs to be saved with V02.08.01 or higher
  - New MPO report template for MPOLx results

## 3 Installer updates

- ✓ New Single step Installer.
- ✓ Updated Code Signing Certificate for the Installer.
- ✓ New user interface for detecting Installation Prerequisites
  - a. The installer will automatically detect the components that are required by J-Reporter but are not installed on the target computer.



- ✓ Additional text included in the Installation User interface to alert the user to turn-off any anti-virus software program that may be running on the target computer.



## 4 Known Issues

- ✓ It is recommended to turn off anti-virus software during the installation of J-Reporter.

- ✓ Administrator rights are required to install J-Reporter.
- ✓ First Autotest may fail when switching from Crossover to Twisted Pair or vice versa.
- ✓ For Fiber, if the user chooses a wrong Cable Type (different from the Adapter), no warning message will be displayed to user. Network Limits list will be empty, since Network limits are displayed based on Adapter and Cable Type. Tier 1 testing will also ignore the wrongly selected cable and will use the default value during AutoTest.
  - a. Ex : MMEF Adapter plugged in , OS1 Cable selected.
- ✓ Re-Certification for application standards is not allowed.
- ✓ From Version 8.0 on, the PC software will not be supported for Windows Vista OS. This is in line with the Microsoft Product Life Cycle. Please click on the link below for details  
<https://support.microsoft.com/en-us/help/22882/windows-vista-end-of-support>
- ✓ If after upgrading your units to Version 8.0, you get an error message “ERROR\_NO\_LIMIT\_DATA\_FILE”, then please go to “TestSettings > Limits” and select a new limit. This error is displayed because some of the Cenelec EN and ISO limits have been renamed.